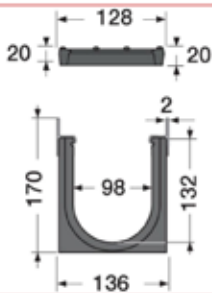
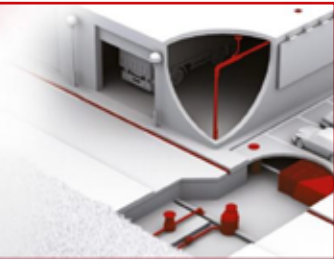
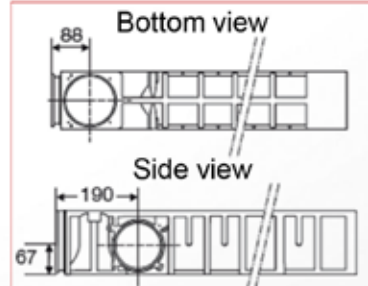
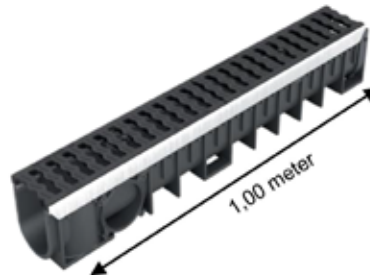


# Kenadrain I Channel 100mm wide with ductile iron gratings class C250 – Height 2

Code: DR102CF



EN1433  
CE



## FUNCTION:

The drainage channel is designed to drain run-off water. In accordance with EN1433 standard and the CE marking, it can be used in public area in class C250.

## DESCRIPTION:

It consists of:

- an injected recycled polypropylene black body
- two galvanized steel edges
- two ductile iron gratings class C250
- 1 screw per grating on galvanized locking bar



STDR10  
SVDR10  
SXDR10

## ACCESSORIES:

To connect the channels to the underground network:

- end cap/end outlet Ø100 or 110 – NTDR102 or NVDR102
- lateral or vertical outlet Ø100, 110 or 125 – STDR10, SVDR10 or SXDR10
- sump unit with outlet Ø110 or 125 – PS100V or PS100X



NTDR102  
NVDR102



PS100V  
PS100X

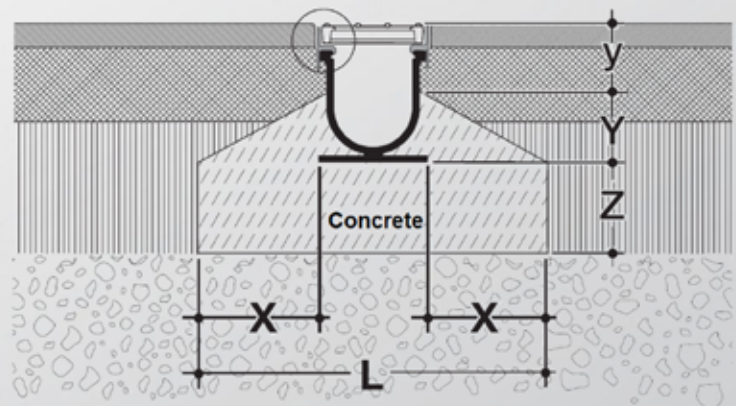
## CARACTERISTICS:

Resistance class: C250  
Effective width: 98 mm  
Effective depth: 132 mm  
Grating type: Ductile iron  
Drainage surface: 392 cm<sup>2</sup>/ml  
Hydraulic section: 122 cm<sup>2</sup>  
Opening dimensions: 18 / 96 mm  
Weight: 12.0 Kg



## IMPLEMENTATION:

X = 150 mm; L = 440 mm  
Z = 150 mm; Y = 90 mm; y = 85 mm



## QUALITY - ENVIRONMENT:

ISO 9001  
ISO 14001  
ISO 50001  
BUREAU VERITAS  
Certification



DATE: September 2014