

DELTA[®]-FASSADE DELTA[®]-FASSADE S

Safe protection from wind and moisture.

Breathable UV-resistant insulation protection sheet.
Permanently dry heat insulation.



Also as PLUS variants, with
integrated self-adhesive borders.

■ Facing sheet

■ For wooden
post and
beam or metal
constructions

■ New
construction
refurbishment

The optimum solution
for any requirement?
DELTA®System, of course!

A pleasant and healthy climate in the home:

DELTA®-FASSADE/D

For a variety of constructions.



■ Outside:

DELTA®-FASSADE

DELTA®-FASSADE PLUS

Wood or metal facings often feature open joints to improve the structure of a facade. However, these joints expose underlying insulation layers to more dirt and moisture. DELTA®-FASSADE offers assured protection in all back-vented facing constructions featuring open joints up to 20 mm wide that cover no more than 20 % of the surface.

DELTA®-FASSADE S

DELTA®-FASSADE S PLUS

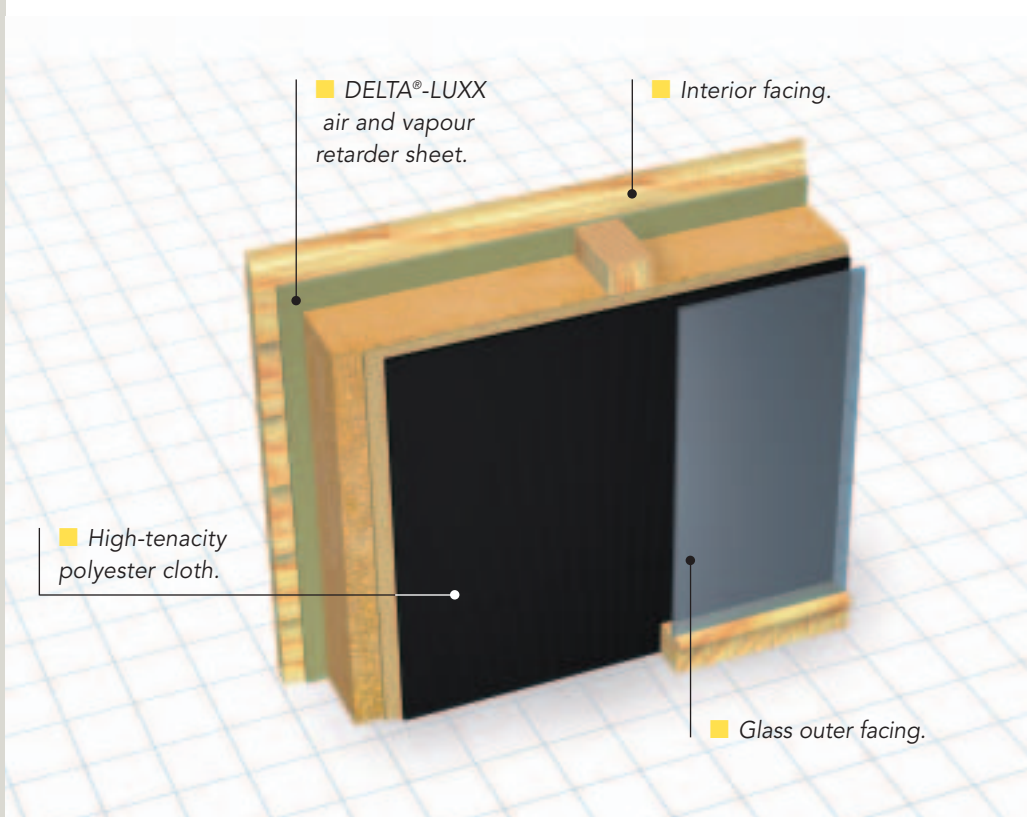
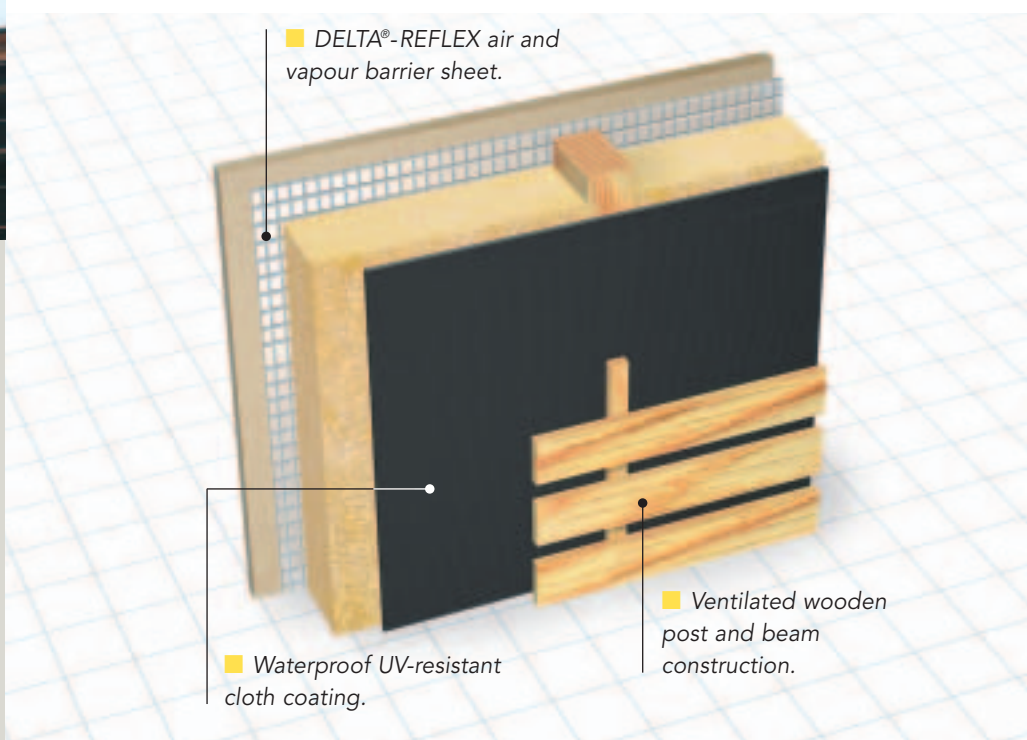
Facing constructions featuring very wide open joints offer new design options – at the same time, they increase the risk of the insulation layer being impaired in its function by dust or rain. DELTA®-FASSADE S is a safe package for the heat insulation in all back-vented facing constructions featuring open joints up to 50 mm wide that cover no more than 40 % of the surface.

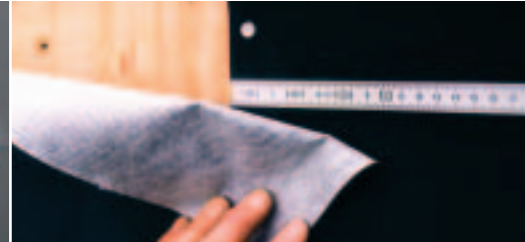
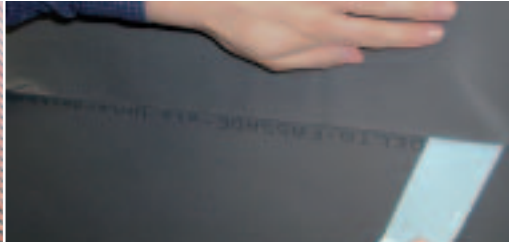
■ Inside:

DELTA®-REFLEX/DELTA®-REFLEX PLUS

Vapour barrier sheet. Provides 10 % increase in thermal insulation, 50 % heat reflection, 100 % barrier against air and vapour.

DELTA® quality branded products made by Dörken.





Ideal solution for wooden post and beam constructions.

DELTA®-FASSADE PLUS with integrated self-adhesive border.

Lay sheets with an overlap of 10 cm.

DELTA®-FASSADE S

Waterproof. Highly tear-resistant.

DELTA®-FASSADE ...

- ... consists of a highly tear-resistant polyester cloth with a waterproof special coating.
- ... may be used as a breathable insulation-protection sheet in all back-vented facing constructions featuring open joints up to 20 mm wide that cover no more than 20 % of the surface.
- ... is permanently UV-resistant.
- ... offers high permeability to inside vapour through its S_d value of approx. 0.02 m.
- ... ensures a thoroughly agreeable interior climate in wooden post and beam constructions because of its excellent physical properties.
- ... represents the optimum solution for windproof facings in rehabilitation projects.
- ... may be used in metal constructions.

DELTA®-FASSADE S ...

- ... may be installed in all back-vented facing constructions featuring open joints up to 50 mm wide that cover no more than 40 % of the surface.
- ... is highly tear-resistant.
- ... is very easy to lay out.

DELTA®-FASSADE PLUS and DELTA®-FASSADE S PLUS with integrated self-adhesive border provides a faster windtight installation.



DELTA®-FASSADE S offers safe protection under open facings with joints up to 50 mm wide.

Why not profit from the DELTA®System?

Outside ...

... DELTA®-FASSADE/DELTA®-FASSADE S breathable high-tenacity insulation-protection sheets. Safe protection from moisture from outside combined with optimum vapour permeability to transport moisture generated by residential use that penetrates the construction from inside.

Inside ...

... a DELTA®-REFLEX air and vapour barrier; as DELTA®-REFLEX PLUS with integrated self-adhesive border. An energy-saving sheet made of rugged, highly flexible 4-ply material. Reflects heat and saves on heating costs. Provides protection from electrical smog.

Needless to say, we have a range of perfect accessories, of which you find additional information on the next page.



DELTA®-FASSADE DELTA®-FASSADE S

Technical Data Overview:

Material	Highly tear-resistant polyester felt with a special waterproof plastic coating.
Application	Open facings featuring joints up to 20 mm wide that cover no more than 20 % of the surface. DELTA®-FASSADE S for open facings featuring joints up to 50 mm wide that cover no more than 40 % of the surface.
Fire resistance	Class E (EN 13501-1)
Tensile strength	approx. 270/230 N/5 cm approx. 370/270 N/5 cm (DELTA®-FASSADE S) (EN 12311-2)
Watertightness	Watertight W 1 (EN 13859-2) Watertight W 1 (EN 13859-1+2) (DELTA®-FASSADE S)
S _d value	approx. 0.02 m
Vapour flow resistance	approx. 0.028 m ² hPa/mg
Weight	approx. 210 g/m ² approx. 270 g/m ² (DELTA®-FASSADE S)
Roll weight	approx. 16 kg approx. 20 kg (DELTA®-FASSADE S)
Roll size	50 m x 1.5 m

Due to variable weather and UV conditions we recommend the efficient covering of our sheets.

DELTA®-Accessories for DELTA®-FASSADE/DELTA®-FASSADE S.

Dörken makes your life easier – systematically.

You are sure to appreciate these handy DELTA®-Accessories:



DELTA®-THAN

Permanently elastic sealing compound for fixing and seam jointing of DELTA® sheet products. Also can be used to secure connections.

DELTA®

DELTA® System ...

... for owners:

" ... What I get is a mature problem solution provided at a fair price by the top specialist in quality branded products!"

... for workers:

" ... What I get is a complete system made by a single manufacturer that enables me to do anything to the owner's entire satisfaction. There is no safer way!"

... for planners:

" ... I can be certain that both innovative and standard products will be used in implementing my roof and cellar plans in a systematic and forward-looking way."



Dörken GmbH & Co. KG
Wetterstraße 58
D-58313 Herdecke
Tel.: +49 23 30/63-0
Fax: +49 23 30/63-355
bvf@doerken.de
www.doerken.de

A company of the Dörken Group.

■ **Standard requests for tender and detailed installation instructions** for all DELTA® products may be obtained from **www.doerken.de** as PDF files for you to print out and save.